



Jeep Grand Cherokee WK2

MY2014-2016

Hidden Winch Mount

IMPORTANT! – READ BEFORE INSTALLATION

- This product must be installed exactly as per these instructions using only hardware supplied.
- Take a few moments to read instructions thoroughly before beginning work.
- In the event of damage to any component please contact OFFROAD ANIMAL to arrange repair/replacement of components.
- Do not use this product for any vehicle make or model other than that specified on these instructions.
- Do not remove labels from this product.
- This product and its fixings must not be modified in any way unless stated in these fitting instructions.
- The installation of this product is recommended for trained personnel.
- These instructions are correct at time of publication. OFFROAD ANIMAL cannot be held responsible for the impact of any changes subsequently made by the vehicle manufacturer. If you find something has changed please contact us to let us know!
- During installation it is the duty of the installer to check correct operation/clearances of all components.
- If Instructions are to be printed for reference in the workshop, it is recommended that they are printed in colour, for best legibility.
- ESTIMATED INSTALL TIME: 3 hours with fitting winch

GENERAL CARE AND MAINTENANCE

Only wash the product with a PH neutral car wash to prevent paint damage and discolouration.

Plastic parts may be maintained with silicone spray.

Do not use acidic or alkaline based cleaning products.

It is important to perform regular checks (pre trip or on an annual basis) on the installed product. Checks include:

- Visual inspection for damage (eg. cracks, chips, dents etc.)
- Electrical wiring is not rubbing anything or worn out
- Bolts are torqued to correct specification (see torque guide below)

For touching up small stone chips, Offroad Animal recommends the following paint products:

- Dupli-Color Trim & Bumper Paint Black (TB101)
- VHT Hood, Bumper & Trim Paint Black (SP27)

BOLT TORQUE SETTINGS

Use the following bolt torques on all general fasteners, unless otherwise specified.

| GENERAL FASTENERS | |
|-------------------|-----------|
| Size | Torque Nm |
| M5 | 5 Nm |
| M6 | 9 Nm |
| M8 | 22 Nm |
| M10 | 44 Nm |
| M12 | 77 Nm |

Use the following bolt torques on all structural front bar mount and tow point fasteners, and rear towbar fasteners, unless otherwise specified.

| FRONT BAR MOUNTS AND TOW POINTS + REAR TOWBAR | |
|--|-----------|
| Size | Torque Nm |
| M10 | 57 Nm |
| M12 | 100 Nm |
| M14 | 164 Nm |
| M16 | 248 Nm |


Always use a torque wrench to set correct torque settings. Ensure torque wrench is set to Nm unit of measurement. Otherwise perform conversion to lb-ft.

PARTS LISTING

IMPORTANT: Check all parts are present before beginning work! Contact OFFROAD ANIMAL if something is missing.

Main Parts – In the Box

| Qty | Part Number | Description | Image |
|-----|---------------------|--|---|
| 1 | HW-JGC-WK2-14-ASM2L | HIDDEN WINCH MOUNT BRACKET LH |  |
| 1 | B-0055 | HIDDEN WINCH MOUNT CONTROLLER MOUNT |  |
| 1 | B-0057R | SUB SUPPORT WK2 WINCH MOUNT RH |  |
| 1 | B-0052 | WINCH CRADLE WK HIDDEN |  |
| 1 | B-0057L | SUB SUPPORT WK2 WINCH MOUNT LH |  |
| 2 | P-0014 | WK2 RADIATOR BRACE |  |
| 1 | HW-JGC-WK2-14-ASM2R | HIDDEN WINCH MOUNT BRACKET RH |  |

| | | | |
|----------|--------|------------------------|---|
| 1 | B-0087 | AIR SUSPENSION BRACKET |  |
|----------|--------|------------------------|---|

Small Parts – Contained in Small Parts Kit Bag

| Qty | Part Number | Description |
|-----------|-------------|----------------------------------|
| 10 | M10 X 30 | M10 X 30 HEX BOLT 8.8 ZINC PLATE |
| 10 | M10 FN | M10 FLANGE NUT |
| 10 | M10 FW | M10 FLAT WASHER |
| 3 | M6 X 20 | M6 X 20 HEX BOLT 8.8 ZINC PLATE |
| 3 | M6 FN | M6 FLANGE NUT |
| 3 | M6 FW | M6 FLAT WASHER |


TOOLS REQUIRED

The following tools will be required to install the product.

| Hand Tools | Power Tools | Workshop Equipment |
|--|-------------|--------------------|
| 10mm Spanner 13mm Spanner 15mm Spanner 16mm Spanner 4mm Allen Key 5mm Allen Key 10mm Socket 13mm Socket 16mm Socket Ratcheting Socket Wrench Flat head screw driver or Pry Tool 3mm drill bit | Power drill | None |

WORKSHOP SAFETY

It is the responsibility of the installer to always complete works in a safe manner. Make sure the following safety equipment is available and precautions are observed whilst fitting this product.

| | |
|---|--|
| <p>Hearing Protection</p>  | <p>Always wear ear protection when using power tools.</p> |
| <p>Eye Protection</p>  | <p>Ensure eye protection is always worn when cutting or drilling.</p> |
| <p>Manual Handling</p>  | <p>Do not attempt to lift bar assemblies or rock sliders on your own.</p> <p>Always use two people to lift or use mechanical Lifting aid such as hydraulic lifting trolley.</p> |
| <p>Vehicle Support</p>  | <p>Always ensure vehicle is properly supported when working on it. Do not attempt to fit products whilst suspension work is being carried out. Do not work under a vehicle supported only by a jack.</p> |



1. First step is to remove the lower air dam fascia. To do this climb under your Jeep and remove all 5 quarter turn clips by hand. Two are tucked up high in each corner and 3 in the middle.
2. Once they are removed pull the entire lower air dam away from Jeep by hand. You will not be reusing this part

TOOLS REQUIRED

None

FASTENERS

Retain only if you wish to refit later



3. Next step is to remove the rest of the front bumper. Start with bonnet/hood open and pry out two clips shown with trim tool or flat head screw driver.

TOOLS REQUIRED

Trim tool
Or
Flat head screwdriver

FASTENERS

Retain factory clips



4. At the wheel arch on both sides, you will need to pry out 2 plastic rivets. You can also drill out the centre of the rivet if you're struggling to pry it out.
- 5.
6. Remove screw shown with 10mm socket or spanner.

TOOLS REQUIRED

Trim tool
Or
Flat head screwdriver

10mm socket or spanner

FASTENERS

Discard plastic rivets



7. Pull factory flare away from bumper, using a flat head screwdriver release at least 2 of the push in clips on top edge being careful not to break them as you pull the flare away from the body.

TOOLS REQUIRED

Flat head screwdriver

FASTENERS



8. Pull the edge of the bumper away from the body.

TOOLS REQUIRED**FASTENERS**



9. Lifting the top section ever so slightly you can release clips holding in the top section and pull the remainder of the bumper away.

TOOLS REQUIRED**FASTENERS**

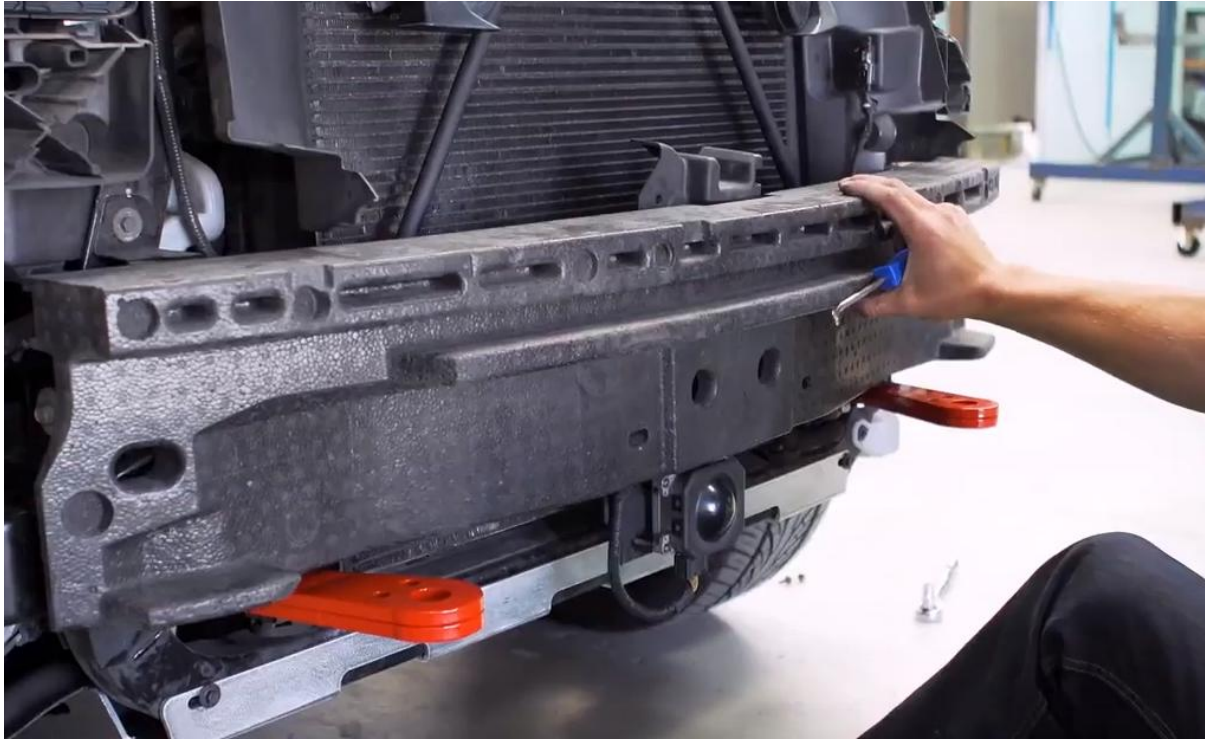


10. Pull out 2 plastic Christmas tree clips holding foam in.

TOOLS REQUIRED

Trim tool
Or
Flat head screwdriver

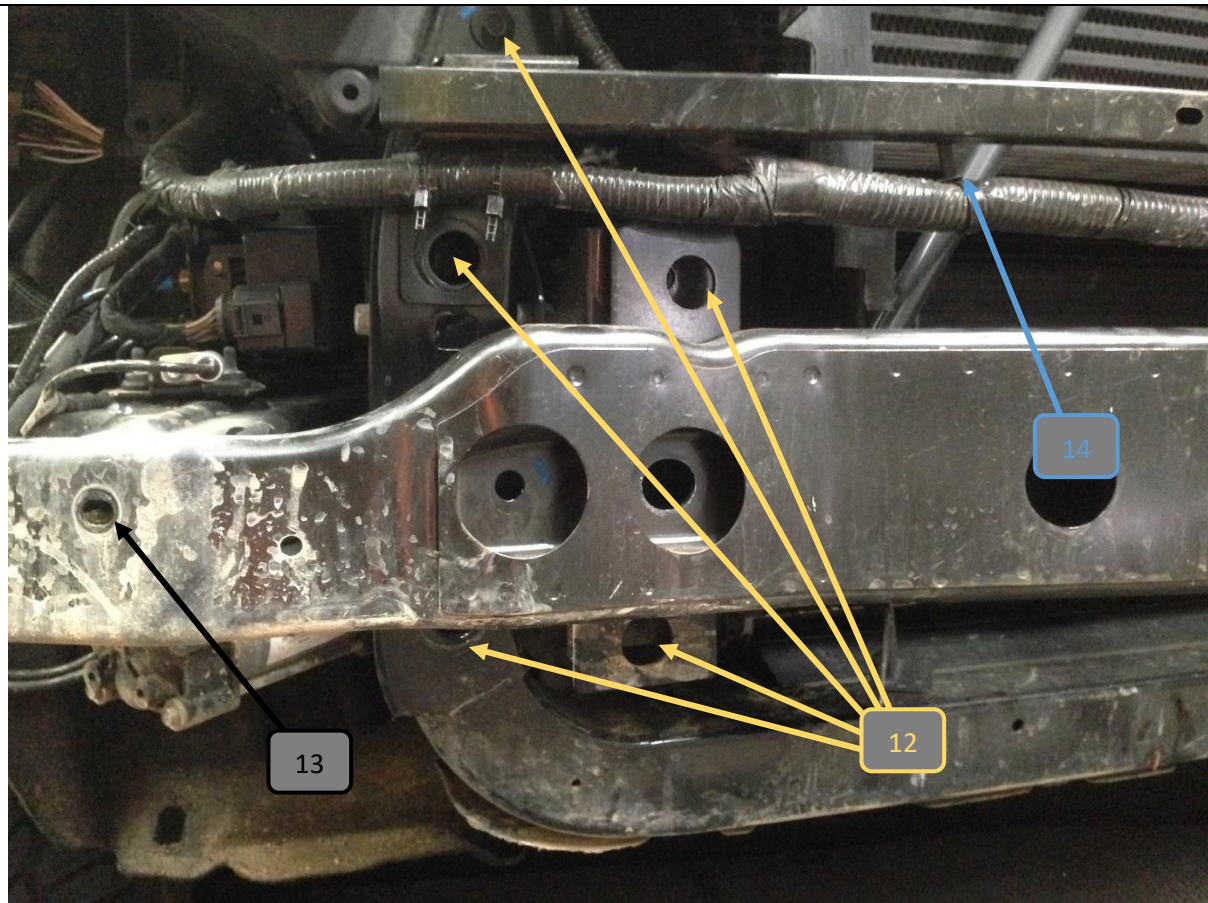
FASTENERS



11. Pull foam insert off.

TOOLS REQUIRED

FASTENERS



12. Remove bumper reinforcement by removing 8 x M8 bolts (4 per side with 13mm tool) and 2 x M6 bolts with 10mm tool.

13. If equipped with air suspension remove 2 flange nuts holding compressor onto bumper reinforcement

14. Using trim tool or similar remove all loom securing keepers holding wiring onto bumper reinforcement.

TOOLS REQUIRED

10mm spanner or socket
13mm spanner or socket

Trim tool
Or
Flat head screwdriver

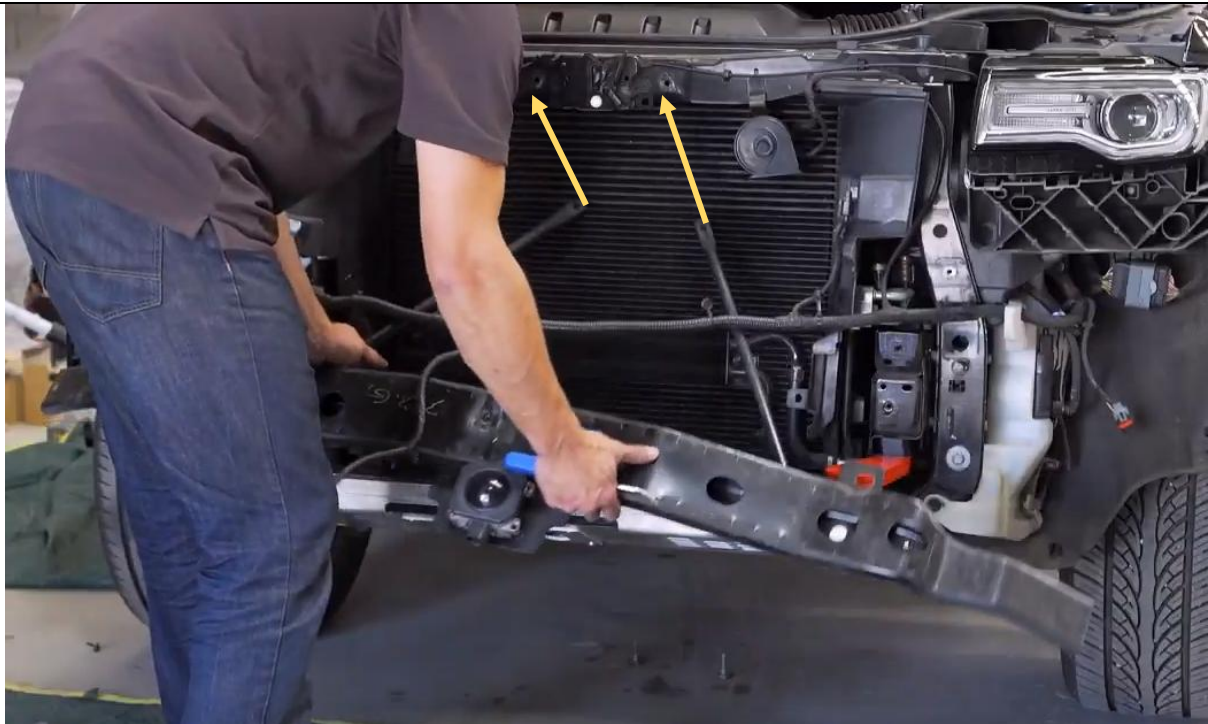
FASTENERS

Retain all fasteners, some will be reused



15. If Adaptive cruise control is fitted, unplug loom and pull sensor off posts.

TOOLS REQUIRED**FASTENERS**



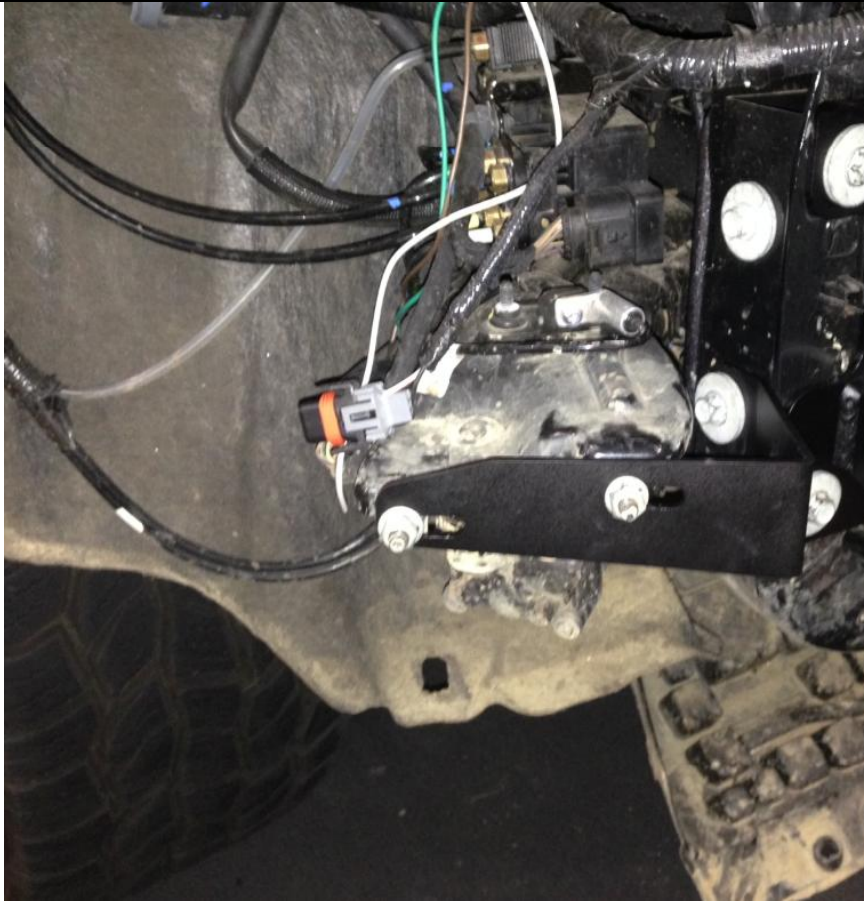
16. Remove 2x screws with 13mm tool holding round support bars from top of bonnet support then remove entire reinforcement bar.

TOOLS REQUIRED

13mm socket or spanner

FASTENERS

Retain for reuse



17. If vehicle is fitted with Air Suspension, fit Air suspension bracket as shown.
18. If no air suspension fitted, you can discard this bracket or send it back to Offroad Animal and we'll send you a hat.

TOOLS REQUIRED

13mm socket or spanner
15mm socket or spanner

FASTENERS

Reuse factory hardware



19. Cut tab off shown in picture from both sides.

TOOLS REQUIRED

Angle grinder
or
Air hacksaw
or
Sawzall

FASTENERS



20. Place mount on chassis and fit reusing factory M8 bolts.

TOOLS REQUIRED**FASTENERS**

Factory M8 hardware



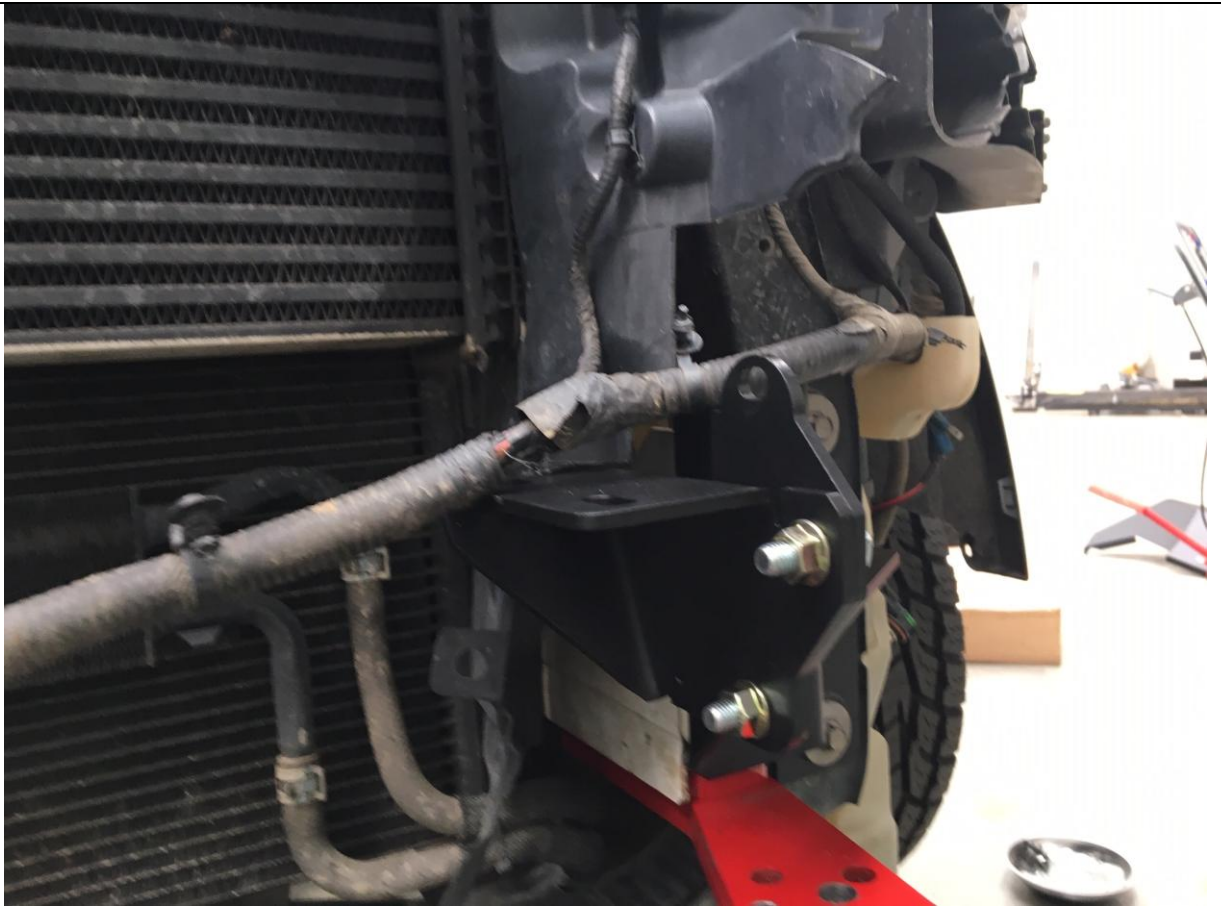
21. Torque up M8 hardware.

TOOLS REQUIRED

13mm spanner or socket

FASTENERS

Factory M8 hardware



22. Fit sub support with M10 bolts, flat washer and flange nuts.

23. Repeat for other side

TOOLS REQUIRED

16mm spanner or socket

FASTENERS

M10x30 Hex bolt (4)
M10 Flat washer (4)
M10 Flange nuts (4)



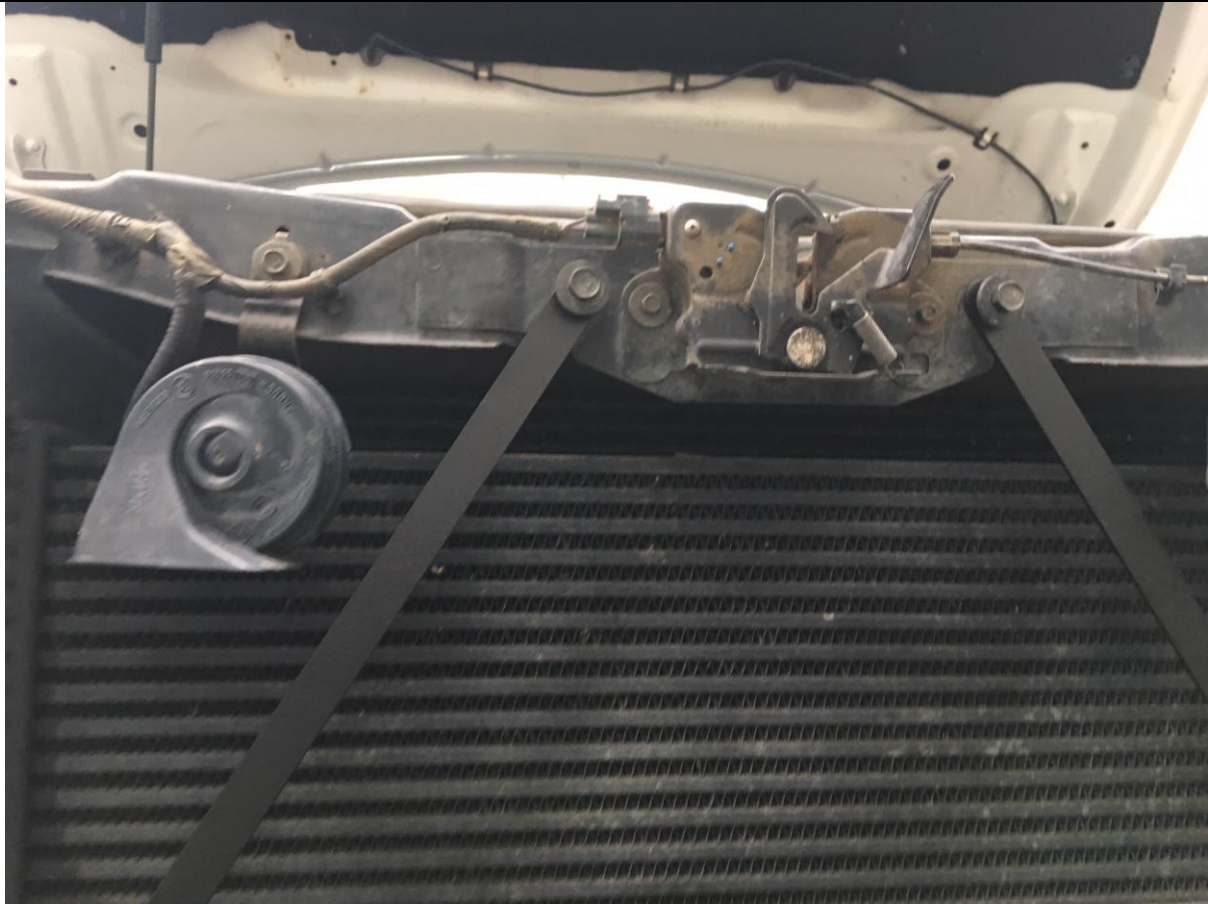
24. Lift winch cradle onto sub supports and secure with M10x30 bolts, flat washers and flange nuts

TOOLS REQUIRED

16mm spanner or socket

FASTENERS

M10x30 Hex bolts (6)
M10 Flat washers (6)
M10 Flange nuts (6)



25. Fit radiator braces as shown with factory bolts.

TOOLS REQUIRED

13mm spanner or socket

FASTENERS

Factory bolts



26. Fit lower end of radiator supports to winch cradle with M6 bolts, flat washers and flange nuts.

TOOLS REQUIRED

10mm Spanner or Socket

FASTENERS

M6x20 Hex Bolt (2)
M6 Flat washer (2)
M6 Flange nut (2)



27. If you are fitting a winch that does not have an integrated control box (like a Warn Zeon) then you can use the supplied winch controller bracket to mount your control box as shown. Use one existing M10 bolt and then add M6 bolt washer and flange nut.

Skip this step if your winch has an integrated control box

TOOLS REQUIRED

16mm spanner or socket
10mm spanner or socket

FASTENERS

M6x20 Hex bolt (1)
M6 flat washer (1)
M6 flange nut (1)



28. Lift winch onto winch cradle and secure with hardware supplied with winch.

29. Ensure the clutch handle is rotated down on the winch so you can access it when the bumper is on

TOOLS REQUIRED

16mm spanner or socket

FASTENERS

Supplied with winch

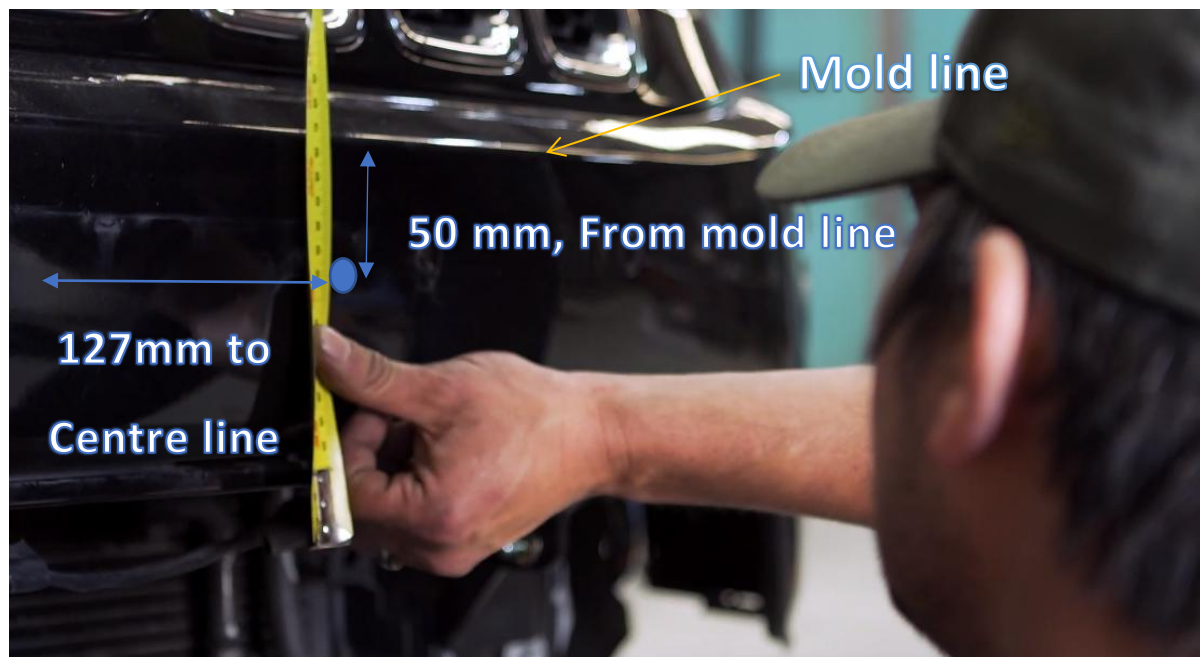


30. Some winches are larger than others and require you to cut off plastic protrusion inside the bumper, as shown above

TOOLS REQUIRED

Angle Grinder
Or
Air hacksaw

FASTENERS

**31. Mark position for fairlead bolt.**

To do this you will need to mark the centre of the bumper as seen from the centre grill slot.

Then measure down from mold line shown in arrow above; 50mm down and 127mm way from centre line.

This new point is a bolt location for the fairlead.

Measure 254mm to the other side of the centre line and this is the other mounting hole

32. Drill a small pilot hole 3mm to check you have the correct position lining up with the winch cradle behind the bumper.**TOOLS REQUIRED**

Tape Measure
Marking pen
3mm Drill Bit
Power Drill

FASTENERS



33. Once mounting hole positions are marked, put fairlead up to bumper with mounting holes matching your marks.

34. Trace around fairlead with marking pen

TOOLS REQUIRED

Marking pen

FASTENERS



35. Cut out fairlead traced area.

TOOLS REQUIRED

Jigsaw
or
Air hacksaw
or
Angle grinder

FASTENERS



36. If you desire, you can line cut out area with pinch weld.

TOOLS REQUIRED**FASTENERS**



37. Refit bumper with factory screws.

TOOLS REQUIRED

10mm socket or spanner

FASTENERS

Factory hardware



38. Fit fairlead with hardware supplied with winch.

TOOLS REQUIRED

FASTENERS



39. If purchased, fit number plate flip to bumper. Drill holes and fit with M6 supplier hardware from number plate flip

TOOLS REQUIRED

6mm drill bit
Power drill

FASTENERS

Supplied from Number plate
flip
M6x20 hex bolts (2)
Flat washers (2)
Flange nuts (2)



40. You're all finished. Enjoy the ability to self-recover.

TOOLS REQUIRED**FASTENERS**